

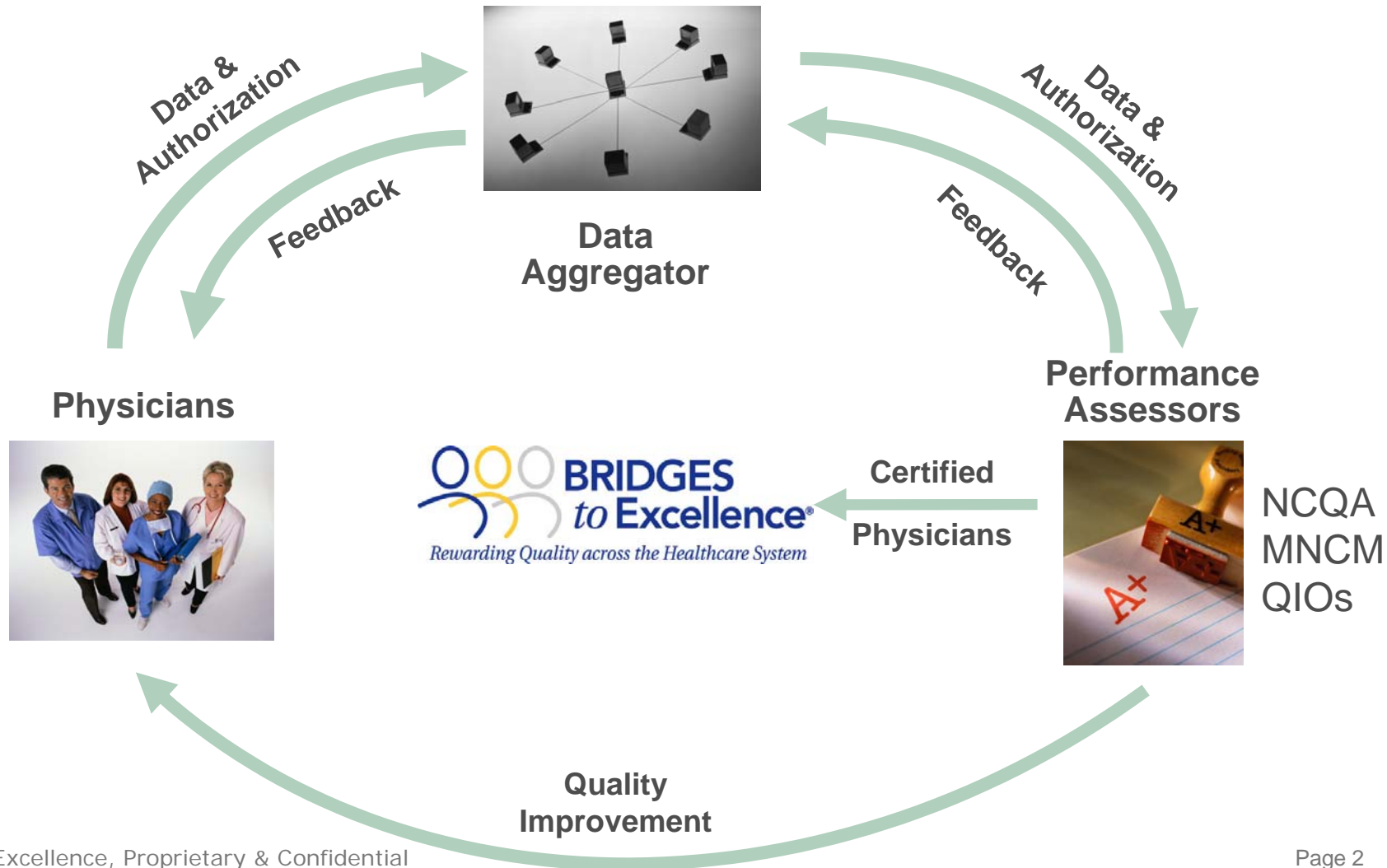


BTE Performance Assessment System

Making Measurement Work

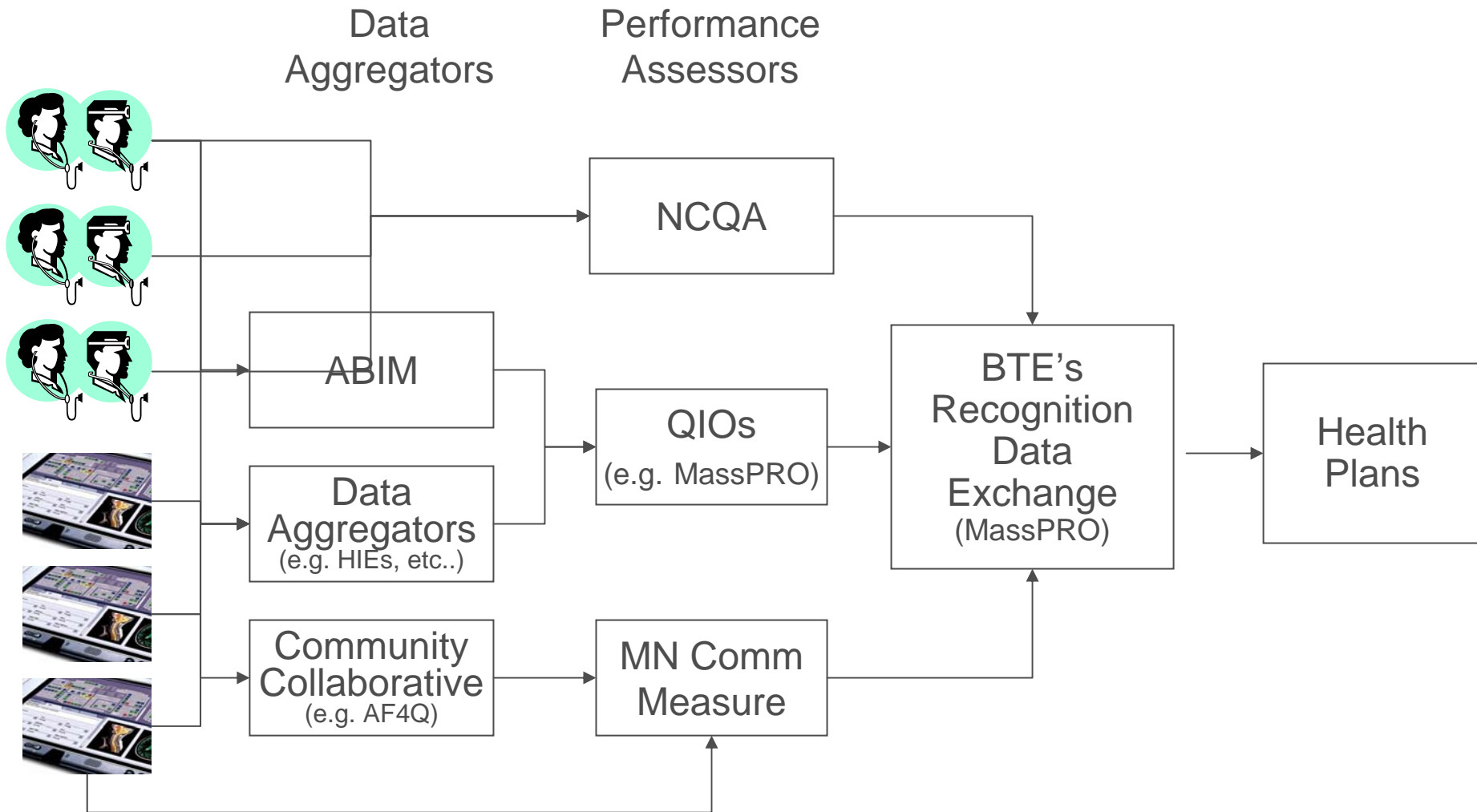


Let's consider a framework for massively reducing assessment cycle time





BTE's Performance Assessment System





A few things on the BTE performance assessment system

Objectives

- Reduce reporting burden for physicians:
- Leverage existing reporting/data aggregation initiatives
- Reduce data collection and reporting costs
- Facilitate connection between QI and incentives
- Speed up cycle time between reporting, improvement, reporting

Efforts are consistent with the AQA principles on performance measurement and reporting.



PAO System general principles

Design Elements and Data Flows

- Voluntary and anonymous for physicians
- Full patient panel when available, otherwise random patient sample.
- Use standardized set of measures and criteria: AQA/NQF-endorsed measures where available, and NCQA-developed measures where there are no AQA/NQF-endorsed measures.
- Feedback loop and QI offered to physicians by DAs and/or PAOs.
- Only successful certifications passed to BTE's RDE by the PAOs.



Some new recognition concepts

Rolling six-month assessments – EMR data will be reviewed every quarter and scores adjusted on a rolling six-month period

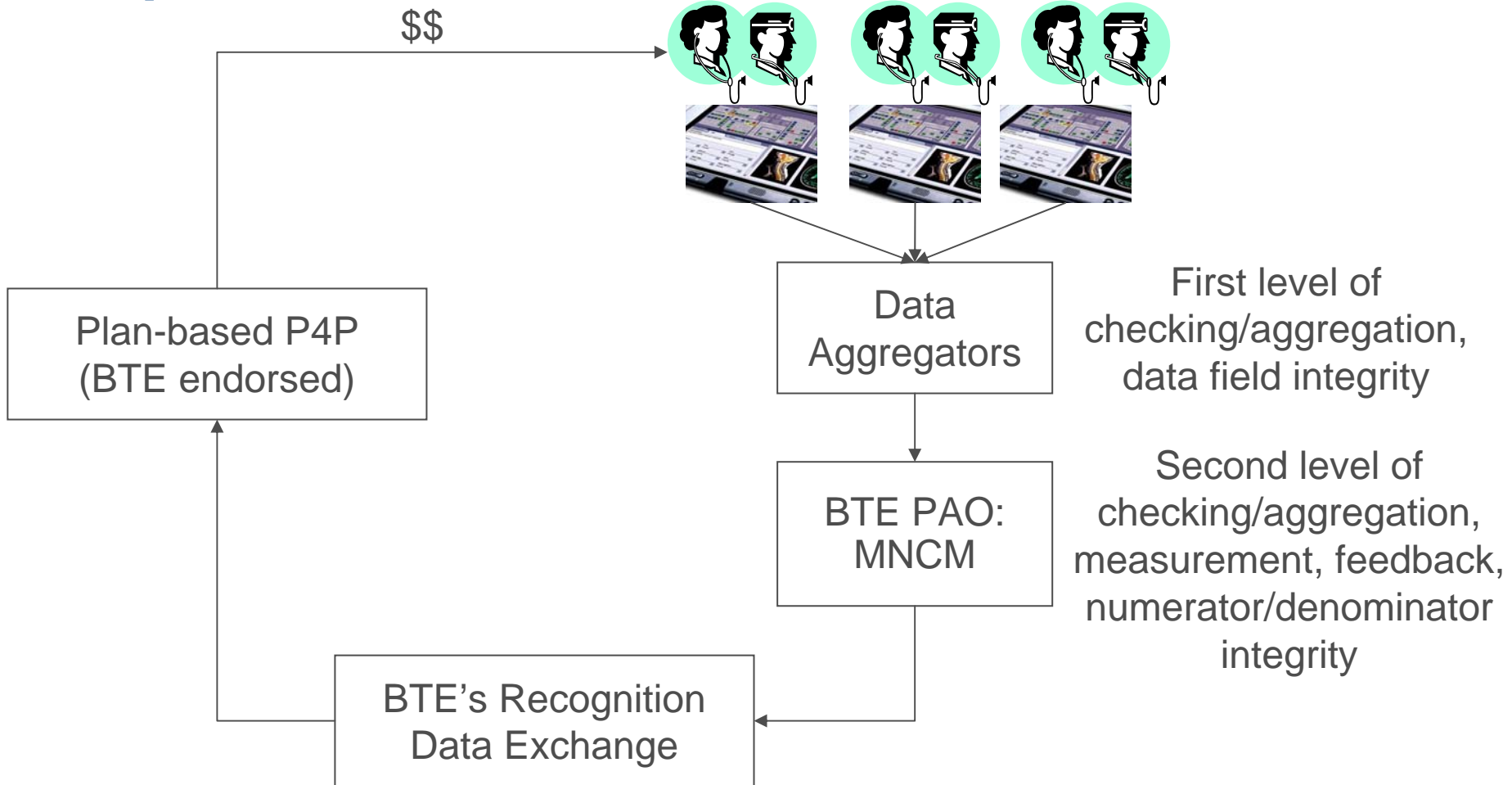
Two-year time limits – in an era of real-time assessment, we can't keep the three-year time frame

Automatically qualify practices for POL Level 2 if they report data using a CCHIT-certified EMR

Physicians achieving level 2 or 3 on two or more BTE programs (in addition to POL Level 2 or 3) can get designated as a Medical Home



Example of performance assessment process:





Roles and responsibilities

- BTE:
 - Program Measures, national synergy, regional collaboration, Ops management
 - Data flows specifications and eligibility documents
- Performance Assessor:
 - Interface with data aggregator
 - Assess physician performance
 - Execute audits
 - Implement measures with BTE nationally
- Data Aggregator
 - Interface with physicians via electronic data
 - Send data to PAO for performance measurement
 - Ensure accurate data intake
 - Collaborate on new measurements to take in new data sets